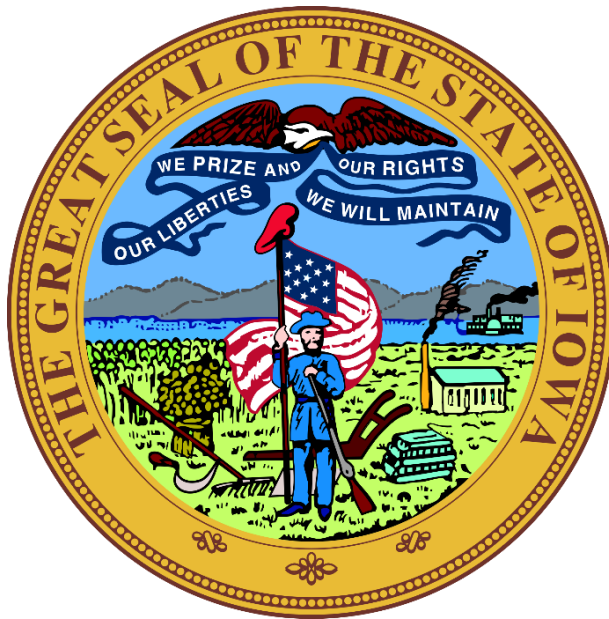




Iowa Board of Parole
Annual Report Fiscal Year 2022



Nick Davis, Chair
Meredith Lamberti, Vice Chair

Regular Board Members

Thomas V. Darden
Ralph Haskins
Susie Weinacht

Alternate Board Members

David Jenkins
Kim Reem
Renee Schulte

Table of Contents

Highlights	3
Agency Overview	4
Iowa Board of Parole Organizational Table	5
Board of Parole Members – Biographies	6
Strategic Plan	9
Parole Risk Assessment Tools	10
Iowa Corrections Offender Network (ICON)	10
Panel Decisions	10
Workload and Decisions Summary	10
Parole Revocations	12
Victim Services	13
Appendix A: Time Served Report	14

Highlights

- The Board of Parole completed 11,228 deliberations in FY22. The deliberations resulted in 2,658 paroles, 1,005 work releases, and the imposition of 479 special sentences pursuant to Iowa Code Chapter 903B.
- The Board continued to prioritize its work to ensure registered victims have the opportunity to provide input into the deliberative process and are notified of decisions made by the Board. In addition, the Board continues to have a toll-free victim telephone number to facilitate communication (800) 448-4611.
- Administrative law judges issued 2,919 decisions in FY22 and 1,199 resulted in a discretionary revocation.
- Three new Board members were appointed in FY22. Meredith Lamberti was appointed in November as Vice Chair. Nick Davis and David Jenkins were appointed as Chair and Alternate Member, respectively, in May.
- The Legislature appropriated \$1,285,739 to the Board and \$58,117.88 was left unspent, half of which reverted to the General Fund, and half transferred to a training and technology carryforward account for FY23, per Iowa Code section 8.62(2).
- On July 1, 2021, the prison population totaled 7,750 offenders (110.9% capacity) and the year ended with 8,434 incarcerated (120.7% capacity).

Agency Overview

The Board of Parole was established in 1907 by the 37th Iowa General Assembly. The Board is composed of one full-time chairperson, one full-time vice-chairperson, and three per diem members who are appointed by the Governor and confirmed by the Senate for staggered four-year terms. There are also three appointed alternate members. Board membership must include at least two of the following: at least one non-lawyer, at least one lawyer licensed to practice law in Iowa with knowledge in correctional procedures and issues, and at least one individual who holds a master's degree in social work or counseling and guidance and who is knowledgeable about correctional procedures and issues. State law also requires that Board membership be racially diverse and balanced along political affiliation and gender demographics. Members report directly to the chairperson, and the member serving as chairperson serves in that role at the pleasure of the Governor. The Board has its own support staff¹, but also receives administrative support from the Iowa Department of Corrections (IDOC).

The mission of the Board is to enhance overall public safety by making evidence-based parole decisions to successfully reenter offenders back into the community to become productive and responsible citizens. To achieve this mission, the Board:

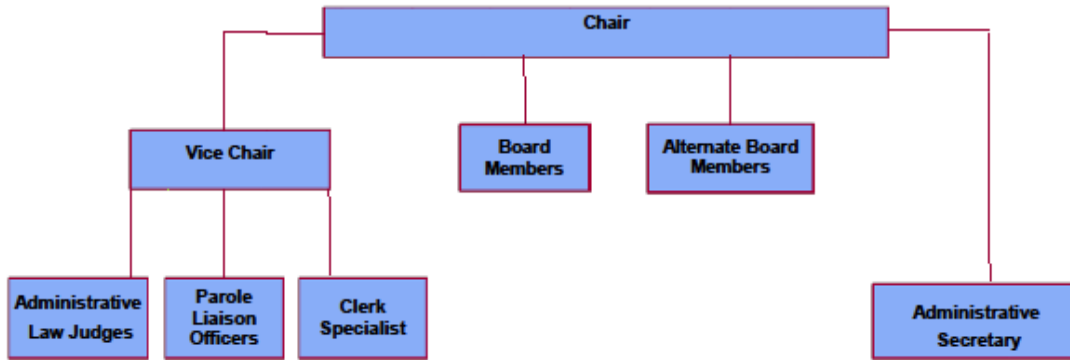
- Reviews and interviews offenders for parole and work release consideration in accordance with applicable administrative rules and via a deliberative system that respects the interest of the public, victims, and offenders, while being mindful of the finite resources available.
- Gathers and reviews information regarding new parole and work release programs being instituted or considered nationwide to determine which programs may be appropriate for use in Iowa.
- Utilizes evidence-based practices to perform risk assessments and promote supervised release at the appropriate time and level.
- Works to enhance a collaborative working relationship with all stakeholders in the criminal justice system by providing technical assistance, information, and counseling on matters related to the Board of Parole's purpose.
- Reviews and makes recommendations to the Governor regarding applications for reprieves, pardons, commutation of sentences, and special restoration of citizenship rights pursuant to Iowa Code Chapter 914.

¹ See Table of Organization

Iowa Board of Parole Organizational Table



November 2021



IOWA BOARD OF PAROLE ORGANIZATIONAL CHART



Board of Parole Members – Biographies

Nick Davis, Chair

Nick Davis was appointed by Governor Kim Reynolds as Chair of the Iowa Board of Parole in May of 2022. He previously served as Deputy Legal Counsel to Governor Reynolds. He is a graduate of the University of Iowa College of Law.

Meredith Lamberti, Vice Chair

Meredith Lamberti was appointed by Governor Kim Reynolds as Vice Chair of the Board of Parole in November 2021. She grew up in Ankeny and later attended Drake University for both her undergraduate degree and law school, with a short stopover in between to teach English to middle school students in Shijiazhuang, China. After graduating from law school, Meredith was a law clerk to Iowa Supreme Court Justice Bruce Zager for two years. She then went on to work as an Assistant Attorney General where she represented the Department of Human Services in child and dependent adult abuse appeals, in addition to termination of parental rights appeals. Meredith also serves on the board at On With Life in her hometown and is an advisor to college members of her sorority, Kappa Alpha Theta. She is honored to continue her career of public service in this role.

Thomas (Thom) V. Darden, Board Member

Appointed to the Board of Parole by Governor Kim Reynolds in 2021, Thom Darden holds a B.S. in Education from the University of Michigan and also took accounting, statistics and marketing courses from Cleveland State University. Mr. Darden has an extensive background in business financing, business development and is currently President of The Darden Group, Inc. in Cedar Rapids. Thom also worked for a sports management company which managed the careers of professional athletes. Thom, himself, was in the NFL. He was a defensive back with the Cleveland Browns for many years and earned All Pro status two years in a row. He holds several franchise records to this day. Mr. Darden resides in Cedar Rapids with his wife.

Ralph Haskins, Board Member

Appointed by Governor Kim Reynolds as a member of the Iowa Board of Parole in 2019. Mr. Haskins holds a Bachelor's Degree from Michigan State University and numerous professional certifications. He and his wife have called Iowa their home since 1982 when he received a corporate transfer to the state. He attributes their relocation as a true gift bringing them to their cherished State of Iowa where they raised their four children and he successfully launched his career and founded a successful residential design-build construction firm and a construction material supply company. Mr. Haskins has been involved in numerous volunteer and philanthropic activities including chairing an international faith-based mission organization and is a past president of the Des Moines Area Home Builders Association. He attends Lutheran Church of Hope in West Des Moines and has been active in projects there including oversight of building the Knapp House of Hope in partnership with MainStream Living. In addition, he has employed and mentored numerous incarcerated individuals and believes in second chances. He is also an active citizen engaging in various policy matters and takes pleasure in serving Governor Reynolds on the Board of Parole.

Sue "Susie" Weinacht, Board Member

Appointed as an Alternate Member of the Board of Parole in 2017; then Board Member in 2019. Recognized by her community as a leader who makes a difference in the lives of many for the betterment of humanity; Susie is a recipient of the State of Iowa 2020 Reverend Dr. Martin Luther King, Jr. Achievement Award for her demonstrated commitment to the vision of Dr. King by promoting the racial equality of all people in Iowa through service, diversity, cultural awareness, and active community participation. Among other recent recognitions is the Cedar Rapids Gazette Everyday Hero recognition, Woman of Achievement in Service to the Community, by Waypoint Services, and the Community Biggie Award, presented by Iowa BIG. Her educational background includes earning an Executive Leadership Certificate from Harvard University, John F. Kennedy School of Government, and a BSc in Education & Teaching Certificate from Eastern Illinois University. As an elected government official (At-Large City Council Member and appointment as Mayor Pro Tem) Susie strived to learn as much as possible to provide citizens the representation entrusted to her and earned status as a Certified Elected Official through the Iowa League of Cities, and Bronze Certification from National League of Cities University. Other involvement and leadership certifications: Leadership Iowa (Assoc. of Business & Industry), The Pacific Institute - Cultural Transformation, Disney Institute Keys of Excellence, and the Chamber of Commerce. She has authored several guest columns including: •"You're Welcome to Join Us" September 2018, the Cedar Rapids Gazette. Our history, our culture, and our future are tied to being inclusive and welcoming. •"False-label law can help stop deadly drugs" May 2015, the Des Moines Register. Tackling synthetic drugs from a consumer fraud & protection approach. •"Community Investment Now Recreation Destination" September 2018, the Cedar Rapids Gazette. Mt Trashmore: From quarry, to landfill, and now a recreation destination of 70+ acres of walking & biking trails. Susie currently serves as a member, by judicial appointment, of the Sixth Judicial District | Iowa Department of Corrections Board.

David L. Jenkins, Alternate Board Member

Appointed as an alternate Board member in May 2022, David earned his Bachelor of Science in Business Administration from Drake University at which time he was also commissioned through ROTC as an officer in the United States Air Force. David subsequently obtained his law degree from Drake University Law School and entered active duty as a judge advocate officer. After serving for five and a half years, at locations in the United States and in Turkey, David returned to Iowa in 1982 and joined the law firm of Bradshaw, Fowler, Proctor & Fairgrave, P.C. In private practice, David represented firm clients in various civil and administrative litigation matters, which includes the privilege to present briefs and oral arguments in cases before the Supreme Court of Iowa, Court of Appeals of Iowa and the United States Court of Appeals for the Eighth Circuit. David retired from the firm after 40 years of practice. Prior to his active duty in the Air Force, David served as an assistant county attorney in Iowa involved exclusively in criminal law matters. While on active duty, David served as a prosecuting attorney, defense attorney, investigating officer and summary court judge, relative to military justice matters. David is grateful for the opportunity to join the staff and other members of the Board of Parole in service to the citizens of Iowa.

Kim Reem, Alternate Board Member

Appointed as an alternate member in May 2021, Ms. Reem brings nearly a decade of experience providing emergency relief, restoration and development opportunities to those seeking poverty alleviation and/or second chance reintegration into the community. In addition, she is the owner of a small business, Reem Consulting. She received her education at Kirkwood Community College in Cedar Rapids, and Maranatha Baptist University in Watertown, Wisconsin. Kim has vast and deep experiences as a community leader. She has led multiple organizations while achieving outstanding results. With her guidance, non-profits have grown in membership, reached financial sustainability, received accolades, and won awards. An alumna of Leadership Iowa, she currently serves as a member of the Iowa Advisory Board for the U.S. Global Leadership Coalition, the Linn County Compensation Board, and the Ready to Run Advisory Board at the Carrie Chapman Catt Center at Iowa State University.

Renee Schulte, Alternate Board Member

Appointed to the Board of Parole as an alternate in September 2021, Renee has worked in many levels of care including psychiatric hospital, child welfare, and therapeutic foster care as a licensed mental health counselor. Prior to her election to public office, Renee served on the National Violence Against Women task force in the Bush administration. As a legislator, she spearheaded the passage of mental health redesign in Iowa creating a regional system from an original 99 county system. She began Schulte Consulting, LLC in 2012. As a consultant, she has worked with multiple states creating strategic plans, legislation and regulations. She has also used her expertise and unique background in government relations and consulting for both non-profit and for-profit providers of healthcare services. Renee has taught at multiple colleges and universities in the psychology department, encouraging the next generation to join in this important work. She and her husband, Brent reside in Urbandale, Iowa.

Strategic Plan

Iowa Board of Parole undertook a strategic planning exercise to identify areas of focus for future development of the Board and its members. It is continuously reviewed based on additional insight and information gathered. The following are ongoing parts of the aforementioned plan:

Training and Professional Development:

- Participate in facility and field location visits to gain better understand operations and facilitate open and active communication across agency boundaries.
- Review intervention programs utilized in Iowa and similar states and explore if those programs would be beneficial to our offender population.
- Continue the practice, when feasible, of including an educational component after each business meeting to learn about and remain up to date on current practices, research, data, and legislation that affects paroling activities.

Analysis and Data Sophistication in Conjunction with Department of Corrections:

- Research and evaluate recidivism rates and identify patterns.
- Research and evaluate revocation activity to identify patterns.
- Evaluate and continue to develop evidence-based policies and practices.

Stakeholder and Public Outreach:

- Enhance and maintain the Board's website for purposes of providing accessibility to information pertaining to Board operations, meetings, and schedules.
- Enhance partnership with Department of Corrections policymakers.
- Enhance partnership with the Community-Based Corrections system.
- Enhance the notification system for registered victims.
- Assist the Governor, when requested, to collect and make recommendations for clemency and commutation of offender sentences.

Population Review Program in Conjunction with Department of Corrections:

- Develop and enhance the Board's methods for identifying cases and target populations to review via periodic internal reviews of the prison population.
- Review candidates at the appropriate time for release consideration.
- Research and evaluate alternatives to traditional revocation.

Parole Risk Assessment Tools

The Board adopted the Iowa Violence and Victimization Instrument (IVVI) as its primary static risk assessment tool for non-sex offenders. The Iowa Board of Parole routinely works with the Iowa Department of Corrections to review and evaluate the assessment tool. The assessment's main use is to aid the Board in measuring the potential for reoffending.

The Board continued to utilize the Iowa Sex Offender Risk Assessment (ISORA) and the Static-99 for sex offender specific risk calculation.

In addition to the IVVI static risk instrument, the IDOC also utilizes a dynamic risk assessment tool called the Dynamic Risk Assessment for Offender Reentry – Institution (DRAOR – Institution) for use in case planning.

Validated risk instruments are one of many tools utilized by the Iowa DOC and BOP.

Iowa Corrections Offender Network (ICON)

The Iowa Corrections Offender Network (ICON) is the main database shared by the Department of Corrections, the Board of Parole, and community-based corrections. This module makes it possible for the Board and the Iowa Department of Corrections to share information on a real-time basis and increases Board workflow and efficiency.

The Board of Parole continually works with the Department of Corrections to increase ICON functionality.

Panel Decisions

Panel reviews are held virtually via Google Meet. This allowed for Board members to participate remotely and provided victims from around the state to interact with the Board without traveling to Des Moines in order to participate.

Workload and Decisions Summary

The Board meets approximately 12 days per month for panel screenings. During these panel days, the Board conducts case reviews, interviews, and decides appeals. A complete breakdown of the Board's workload for FY22 can be found below.

WORKLOAD & DECISIONS SUMMARY

	FY2020	FY2021	FY2022
RELEASE DECISIONS			
Parole	4,725	2,646	2658
Work Release	1,467	824	1005
Special Sentence	544	513	479
Release Denied	5,488	4,912	5024
Appeals Denied	1,104	1,287	1,021
Appeals with Modification	29	11	6
Interview Granted	498	544	560
Other/Miscellaneous ²	645	517	475
TOTAL DECISIONS	14,500	11,254	11,228
SPECIAL REVIEW DECISIONS			
Amend Decision	488	413	354
Paroles Rescinded	166	123	108
Work Release Rescinded	200	79	85
Special Sentence Rescinded	10	9	9
Special Review Denied	25	19	13
TOTAL SPECIAL REVIEW DECISIONS	889	643	569
EXECUTIVE CLEMENCY			
Commutation Decisions	N/A	50	86
Recommended	N/A	1	5
Pardon Decisions	N/A	23	14
Recommended	N/A	7	2
Firearm Restoration Decisions	N/A	52	47
Recommended	N/A	22	24
Firearm Restoration/Pardon Decisions	N/A	45	35
Recommended	N/A	18	18

² Includes effective date changes, decision changes, special condition changes, and work release extensions.

Parole Revocations

The parole revocation process begins with the receipt of a parole officer’s violation report. The alleged violator is subsequently notified to appear before an administrative law judge (ALJ) for a parole revocation hearing. The ALJ determines whether or not the parolee is in violation of the terms of the parole agreement. If the ALJ finds that a parole violation has occurred, one of the following sanctions may be imposed:

- Reinstatement of parole
- Reinstatement of parole with additional conditions imposed (for example, but not limited to, substance abuse evaluation, GPS monitoring, intensive parole supervision, referral to an appropriate treatment program)
- Revocation of parole to a work release program
- Revocation of parole and return to prison

Pursuant to Iowa Code Sections 908.10 and 908.10A, Board ALJs do not hear cases involving parolees sentenced to prison for new felonies or aggravated misdemeanors. In these instances, the parole is deemed revoked as of the date of the commission of the new offense. Although no hearing is conducted for an automatic revocation, an ALJ is required to process the revocation order and notify the parolee of the revocation.

Revocation Statistics

	FY2020	FY2021	FY2022
PAROLE REVOCATIONS			
PAROLE REVOCATION HEARINGS	3,350	3,140	2,919
Parole Revoked to Prison ³	926	538	547
Automatic Revocations	397	322	339
Parole Revoked to Work Release	544	520	456
Paroles Revoked ⁴	1,606	1,277	1,199
TOTAL PAROLES REVOKED	2,003	1,599	1,538

³ Does not include automatic revocations.

⁴ Includes revoking parole to work release, and revoke and discharge parole but does not include automatic revocations.

Victim Services

The Board recognizes that victims are unwilling participants in our criminal justice system. Victims can provide crucial insight into the crimes committed against them by individuals that the Board considers for release.

The Board established its first program for victim participation in 1986. As part of this program, the position of Victim Coordinator was added to the Board's staff. Today, the Victim Coordinator's primary responsibility is to assist victims who want to exercise the following rights established by the Iowa Victim Rights Act, Iowa Code Chapter 915:

- Notify victims of violent crimes, not less than twenty days prior to the Board conducting a hearing at which the offender will be interviewed, and inform the victim that they may submit their opinion concerning the release of the offender in writing prior to the hearing or may appear personally or by counsel at the hearing to express an opinion concerning the offender's release.
- Notify the victim, whether or not the victim appears at the hearing or expresses an opinion, of the Board's decision regarding release of the offender.

The Board continues to register victims of violent offenses. The ICON victim module, merging DOC and BOP victim records, was completed in FY16 and has helped make this process much more accurate and efficient.

At the end of FY22 a total of 7,376 victims were registered with the Board of Parole. The Board mailed a total of 5,272 victim notifications during FY22.

Appendix A – Time Served Report⁵

FY22 CLOSURES BY MOST SERIOUS CRIME AND LENGTH OF STAY	Offenders	Average LOS Months	Min LOS Months	Max LOS Months
A Felony	4	213.50	40.56	492.50
MURDER 1ST DEG - 707.2	4	213.50	40.56	492.50

B Felony	89	113.74	0.36	298.95
PROH ACTS-MFG, DEL, CONSP OR POSS W/INT COCAINE GT 50GM - 124.401(1)(a)(3)	1	83.72	83.72	83.72
PROH ACTS-MFG, DEL, CONSP OR POSS W/INT HEROIN GT 10GM BUT LT 1KG - 124.401(1)(b)(1)	1	53.06	53.06	53.06
PROH ACTS-MFG, DEL, CONSP OR POSS W/INT COCAINE MORE THAN 100GM AND LESS THAN 500GMS - 124.401(1)(b)(2)(b)	1	29.05	29.05	29.05
PROH ACTS-MFG, DEL, CONSP OR POSS W/INT OTHER CONT SUB LT 500GM - 124.401(1)(b)(2)(d)	1	60.56	60.56	60.56
PROH ACTS-MFG, DEL, CONSP OR POSS W/INT COCAINE GT 40GM BUT LT 200GM - 124.401(1)(b)(3)	1	26.94	26.94	26.94
PROH ACTS-MFG, DEL, CONSP OR POSS W/INT LSD LT 10GM - 124.401(1)(b)(5)	4	29.16	0.36	42.60
PROH ACTS-MFG, DEL, CONSP OR POSS W/INT METH GT 5GM BUT LT 5KG - 124.401(1)(b)(7)	31	33.79	18.13	50.79
DIST/POSS W/INT TO DIST SCHED I, II TO PERSONS UNDER 18 - 124.406(2A)	1	165.33	165.33	165.33
ONGOING CRIMINAL CONDUCT - UNLAWFUL ACTIVITY - 706A.2(4)	4	23.94	9.47	35.69
VIOLATION OF 706A.2 ONGOING CRIMINAL CONDUCT - 706A.4	2	131.48	81.91	181.05
ATTEMPTED MURDER, 85% - 707.11	1	32.37	32.37	32.37
VEH. HOMICIDE/OWI 321J.2 - 707.6A(1)	4	70.38	60.63	81.74
VEH. HOMICIDE/RECKLESS 321.261(3) - 707.6A(1)	1	70.39	70.39	70.39
SEX ABUSE 2ND DEG (85%) - LIFE SPECIAL SENTENCE - 709.3	3	36.73	27.14	53.26
SEX ABUSE 2ND DEG (85%) - 709.3	5	245.14	217.86	272.04
SEX ABUSE 2ND DEG - 709.3	1	269.34	269.34	269.34
SEX ABUSE 2ND DEG (85%) - 709.3	1	220.76	220.76	220.76
CRIMINAL TRANSMISSION OF HUMAN IMMUNODEFICIENCY VIRUS - 709C.1	1	173.59	173.59	173.59
KIDNAPPING 2ND DEG (85%) - 710.3	2	142.68	64.08	221.28

⁵ This data captures only those who exited prison after a new admission. Exit from prison does not necessarily indicate a decision from the Board, but could indicate death, successful appeal, time served, etc. Data is provided by the Iowa Corrections Offender Network.

FY22 CLOSURES BY MOST SERIOUS CRIME AND LENGTH OF STAY	Offenders	Average LOS Months	Min LOS Months	Max LOS Months
ROBBERY 1ST DEG (85%) - 711.2	1	298.95	298.95	298.95
ROBBERY 1ST DEG (85%) - 711.2	15	148.13	13.45	212.76
BURGLARY 1ST DEG - 713.3	5	82.03	51.71	114.05
CHILD ENDANGERMENT RESULTING IN DEATH - 726.6(4)	1	133.03	133.03	133.03
CHILD ENDANGERMENT - MULTIPLE ACTS - 726.6A	1	169.11	169.11	169.11

C Felony	550	39.30	0.03	231.74
PROH ACTS-MFG, DEL, CONSP OR POSS W/INT OTHER CONT SUBST LT 500GM - 124.401(1)(c)(2)(d)	2	4.38	3.78	4.97
PROH ACTS-MFG, DEL, CONSP OR POSS W/INT COCAINE LT 10GM - 124.401(1)(c)(3)	1	12.01	12.01	12.01
PROH ACTS-MFG, DEL, CONSP OR POSS W/INT METH LT 5GM - 124.401(1)(c)(6)	133	17.80	0.03	68.68
PROH ACTS-MFG, DEL, CONSP OR POSS W/INT AMPH LT 5GM - 124.401(1)(c)(7)	4	19.96	15.92	26.02
CONSPIRE W/INTENT DELIVER FALSE OTHER I,II,III CS - 124.401(1)(c)(8)	1	27.04	27.04	27.04
PROH ACTS-MFG, DEL, CONSP OR POSS W/INT OTHER SUBST SCHED I, II, III - 124.401(1)(c)(8)	4	21.04	17.57	29.38
CONSPIRE W/INTENT DELIVER FALSE OTHER I, II, III CS - 124.401(1)(c)(9)	4	19.09	14.97	23.95
POSSESSION OF A CONTROLLED SUBSTANCE - 124.401(1)(c)	1	16.74	16.74	16.74
CONSPIRE, RECRUIT PERSON UNDER 18 TO DEL, MFG SCHED I, II, III, IV - 124.406A	1	30.00	30.00	30.00
ELUDING-SPEED IN EXCESS OF 25 MPH OVER LIMIT - PARTICIPATING IN FELONY - 321.279(3)(b)	1	11.15	11.15	11.15
SEX OFFENDER REGISTRATION VIOLATION 2ND OFFENSE OR SUBSEQ - 692A.111	1	10.03	10.03	10.03
CONSPIRACY/COMMIT FORCIBLE FELONY - 706.1,A	1	21.88	21.88	21.88
CONSPIRACY TO COMMIT FORCIBLE FELONY - 706.3(1)	1	11.35	11.35	11.35
CONSPIRACY/COMMIT FORCIBLE FELONY - 706.3,A	8	38.48	15.59	64.41
VOLUNTARY MANSLAUGHTER - 707.4	2	46.00	44.80	47.20
VEH. HOMICIDE/U-INF. OR RECKLESS - 707.6A(2)	5	41.97	29.31	63.85
ASSLT WHILE PARTIC. IN FELONY - 708.3,A	1	36.84	36.84	36.84
WILLFUL INJURY - 708.4	1	55.00	55.00	55.00
WILLFUL INJURY CAUSING SERIOUS INJURY - 708.4(1)	14	40.14	21.58	85.13

FY22 CLOSURES BY MOST SERIOUS CRIME AND LENGTH OF STAY	Offenders	Average LOS Months	Min LOS Months	Max LOS Months
INTIMIDATION WITH DANGEROUS WEAPON INTENT (NON-FORCIBLE) - 708.6	12	24.21	3.39	43.49
INTIMIDATION WITH A DANGEROUS WEAPON - 708.6(1)	14	27.59	3.22	73.29
SEX ABUSE 3RD DEG LIFE SPECIAL SENTENCE - 709.4	17	89.84	29.67	177.27
SEX ABUSE 3RD DEG - 709.4	3	165.83	50.43	231.74
SEX ABUSE 3RD DEG SPOUSE OR COHABITANT - LIFE SPECIAL SENTENCE - 709.4(1)	1	51.68	51.68	51.68
SEX ABUSE 3RD DEG BY FORCE, 1ST OFF - LIFE SPECIAL SENTENCE - 709.4(1)(a)	13	37.55	26.22	64.21
SEX ABUSE 3RD DEG - CHILD VICTIM AGE 12/13 - LIFE SPECIAL SENTENCE - 709.4(1)(b)(2)	10	41.56	28.78	54.64
SEX ABUSE 3RD DEG - VICTIM 14/15, DEF 4+ - LIFE SPECIAL SENTENCE - 709.4(1)(b)(3)(d)	25	37.85	6.68	71.25
SEX ABUSE 3RD DEG - VICTIM 12/13 YRS OLD - LIFE SPECIAL SENTENCE - 709.4(2)(b)	6	103.53	70.00	158.19
SEXUAL ABUSE 3RD DEG - LIFE SPECIAL SENTENCE - 709.4(2C)(4)	6	98.74	33.32	147.99
LASCIVIOUS ACTS WITH CHILD - LIFE SPECIAL SENTENCE - 709.8(1)	20	69.00	27.01	126.68
LASCIVIOUS ACTS W/CHILD TOUCH/FONDLE CHILD, 2ND OFF - LIFE SPECIAL SENTENCE - 709.8(1)(a)	1	47.76	47.76	47.76
LASCIVIOUS ACTS W/ CHILD - FOND/TOUCH, 1ST OFF - LIFE SPECIAL SENTENCE - 709.8(1)(a)	3	10.26	0.07	30.20
LASCIVIOUS ACTS W/CHILD - CHILD FOND/TOUCH DEF, 1ST OFF - LIFE SPECIAL SENTENCE - 709.8(1)(b)	1	0.92	0.92	0.92
LASCIVIOUS ACTS W/ CHILD - LIFE SPECIAL SENTENCE - 709.8(2)	7	43.51	25.10	66.84
KIDNAPPING 3RD DEG - 710.4	3	75.07	26.55	169.21
ROBBERY 2ND DEG (85%) - 711.3	67	71.57	7.37	165.99
ARSON 2ND DEG - 712.3	13	26.90	12.34	48.95
ATTEMPT BURGLARY 1ST DEG - 713.4	2	30.67	12.07	49.28
BURGLARY 2ND DEG - 713.5	59	24.97	0.20	91.02
THEFT 1ST DEG - 714.2(1)	57	27.18	0.69	109.34
FRAUDULENT PRACTICE 1ST DEG - 714.9	2	15.74	4.87	26.61
CRIMINAL MISCHIEF 1ST DEG - 716.3	5	14.89	1.38	36.05
RECKLESS USE OF A FIREARM W/ SERIOUS INJURY - 724.30(1)	1	36.45	36.45	36.45
NEGLECT OR ABANDONMENT - 726.3	5	28.76	11.02	49.11

FY22 CLOSURES BY MOST SERIOUS CRIME AND LENGTH OF STAY	Offenders	Average LOS Months	Min LOS Months	Max LOS Months
CHILD ENDANGERMENT SERIOUS INJURY - 726.6(5)	4	59.43	47.50	70.36
SEXUAL EXPLOIT. OF MINOR - LIFE SPECIAL SENTENCE - 728.12(1)	7	65.41	31.25	133.06

D Felony	939	18.19	0.03	75.07
PROH ACTS-MFG, DEL, CONSP OR POSS - 124.401(1)(d)	6	19.31	12.07	28.16
PROH ACTS-MFG, DEL, CONSP OR POSS - MARIJ LT 50KG - 124.401(1)(d)(2)	16	15.54	4.28	30.99
PROH ACTS-POSS PROD INT FOR MFG CONT SUBST PSEUDOEPHEDRINE - 124.401(4)(b)	2	9.36	5.23	13.49
PROH ACTS-POSS PROD INT FOR MFG CONT SUST LITHIUM - 124.401(4)(f)	1	14.70	14.70	14.70
POSSESSION OF A CONTROLLED SUBSTANCE 3RD AND SUBSEQ - 124.401(5)(c)	118	14.84	0.13	60.33
POSSESSION OF A CONTROLLED SUBSTANCE 2ND OFF - 124.401(5),C	1	8.65	8.65	8.65
GATHERING FOR USE OF DRUGS OTHER THAN MARIJUANA - 124.407,A	3	13.86	8.95	21.32
DEPENDANT ADULT ABUSE - EXPLOITATION > \$100 - 235B.20(5)	1	19.08	19.08	19.08
LEAVE SCENE OF INJURY/DEATH - TRAFFIC - 321.261(4)	3	14.50	7.99	18.26
ELUDING - SPEED 25 MPH OVER LIMIT 2ND OR SUBSEQ - 321.279(2)(b)	2	7.76	7.60	7.93
ELUDING - SPEED IN EXCESS OF 25 MPH OVER LIMIT, PLUS PARTICIPATING IN A FELONY - 321.279(3)(a)	5	5.59	0.92	9.21
OWI 3RD OR SUBSEQ - 321J.2(2)(c)	81	6.79	0.33	26.15
OWI 3RD OR SUBSEQ - 321J.2(2)(c)	6	12.68	2.70	20.82
FAILURE TO AFFIX TAX STAMP - 453B.12	12	15.51	8.49	26.74
INSURANCE FRAUD - 507E.3(2)	1	14.01	14.01	14.01
SEX OFFENDER REGISTRATION VIOLATION 2ND OR SUBSEQ - 692A.104-B	9	15.16	9.51	25.49
SEX OFFENDER VERIFICATION VIOL 2ND OR SUBSEQ - 692A.108-B	2	17.86	10.26	25.46
SEX OFFENDER REGISTRATION VIOLATION 2ND OR SUBSEQ - 692A.111-B	12	13.07	0.10	25.89
CONSPIRACY/COMMIT NON-FORCIBLE FELONY - 706.1,B	2	14.24	11.45	17.04
CONSPIRACY/COMMIT FELONY (PERSON) - 706.3,B	2	15.07	11.48	18.65
CONSPIRACY/COMMIT FELONY (PROPERTY) - 706.3,C	3	11.17	8.26	15.39

FY22 CLOSURES BY MOST SERIOUS CRIME AND LENGTH OF STAY	Offenders	Average LOS Months	Min LOS Months	Max LOS Months
INVOL MANSL/PUBLIC OFFENSE - 707.5(1)	5	23.49	10.66	39.44
VEH. HOMICIDE/DKAG RAC. OR ELUDE - 707.6A(3)	1	37.04	37.04	37.04
SERIOUS INJURY BY VEHICLE - 707.6A(4)	11	18.79	2.50	29.21
STALKING - 708.11(3B)	2	19.85	11.61	28.09
DISARMING A PEACE OFFICER - 708.13(2),B	2	18.91	12.70	25.13
ASSAULT - SERIOUS INJURY - 708.2(4)	5	15.95	9.80	22.40
DOMESTIC ABUSE ASSAULT 3RD OR SUBSEQ - 708.2A(4)	2	30.90	16.74	45.07
DOMESTIC ABUSE ASSAULT 3RD OR SUBSEQ (85%) - 708.2A(4)	23	28.24	15.10	46.02
DOMESTIC ABUSE ASSAULT IMPEDING AIR/BLOOD FLOW CAUSING BODILY INJURY - 708.2A(5)	38	19.03	0.03	49.44
ASSLT WHILE PARTIC. IN FELONY - 708.3,B	4	40.04	11.68	75.07
ASSAULT INTENT OF INJURY PEACE OFFICER/OTHERS - 708.3A(1)	2	10.41	7.17	13.65
ASSAULT WITH WEAPON PEACE OFFICERS/OTHERS - 708.3A(2)	7	20.25	12.34	38.98
WILLFUL INJURY CAUSING BODILY INJURY - 708.4(2)	50	17.41	2.93	58.49
INTIMIDATION WITH A DANGEROUS WEAPON - 708.6(2)	11	16.49	7.34	22.93
GOING ARMED WITH INTENT - 708.8	5	25.98	12.47	42.53
THREAT OF TERRORISM - 708A.5	1	12.60	12.60	12.60
ASSLT. TO COMMIT SEX ABUSE/BODILY INJ. -10 YR SPECIAL SENTENCE - 709.11(2)	5	17.53	5.72	22.99
LASCIVIOUS ACTS W/CHILD SOLICITATION - 10 YR SPECIAL SENTENCE - 709.8(1)(d)	7	21.63	4.84	49.41
LASCIVIOUS ACTS W/CHILD - INFLICT PAIN/DISCOMFORT - 10 YR SPECIAL SENTENCE - 709.8(1)(e)	2	27.89	26.51	29.28
LASCIVIOUS ACTS WITH A CHILD SOLICITATION - 10 YR. SPECIAL SENTENCE - 709.8(3)	1	67.37	67.37	67.37
ENTICING AWAY A MINOR - 710.10(2)	6	21.88	0.33	38.29
EXTORTION - 711.4	5	15.38	7.70	23.09
THREATS - EXPLOSIVE OR INCENDIARY DEVICE - 712.8	4	18.37	9.80	24.77
ATTEMPTED BURGLARY 2ND DEG - 713.6	3	16.18	5.30	24.64
BURGLARY 3RD DEG - 713.6A	155	15.05	1.88	58.13
BURGLARY 3RD DEG MOTOR VEHICLE 2ND OR SUBSEQ - 713.6A(2)	3	16.09	10.86	24.14
THEFT 2ND DEG - 714.2(2)	99	15.10	1.55	37.83
FORGERY - 715A.2(2)(a)	74	15.56	4.44	51.71

FY22 CLOSURES BY MOST SERIOUS CRIME AND LENGTH OF STAY	Offenders	Average LOS Months	Min LOS Months	Max LOS Months
FORGERY - 715A.2(A)	1	10.20	10.20	10.20
UNAUTH. USE OF CREDIT CARD, GREATER THAN \$1K LESS THAN \$10K - 715A.6(2)(B)	4	16.39	11.28	21.51
IDENTITY THEFT OVER \$1000 UNDER \$10000 - 715A.8(3)(b)	1	7.24	7.24	7.24
CRIMINAL MISCHIEF 2ND DEG - 716.4	20	17.11	5.33	35.43
INTERFERENCE W/OFFICIAL ACTS DANGEROUS WEAPON - 719.1(1)(e)	3	19.74	12.40	26.12
INTERFERENCE W/OFFICIAL ACTS DANGEROUS WEAPON - 719.1(1)(f)	10	16.30	7.83	25.66
ESCAPE OF FELON - 719.4(1)	2	10.43	8.95	11.91
FURN. INTOXICANT TO INMATES - 719.7	1	20.33	20.33	20.33
POSS OF CONTRABAND IN CORRECTIONAL FACILITY - 719.7(3)(a)	1	28.49	28.49	28.49
POSS OF CONTRABAND IN CORRECTIONAL FACILITY - 719.7(4)(b)	2	14.46	10.26	18.65
POSS OF CONTRABAND IN CORRECTIONAL FACILITY - 719.7(4)(b)	1	12.93	12.93	12.93
POSS CONTRABAND IN CORRECTIONAL FACILITY - 719.7(4B)	1	11.22	11.22	11.22
FURN. CONTR. SUBST. TO INMATES - 719.8	2	16.91	14.44	19.38
TRAFFIC AND STOLEN FIREARM 1ST - 724.16A,1	1	7.86	7.86	7.86
TRAFFICKING IN STOLEN WEAPONS - 724.16A,1	7	21.82	11.68	36.05
SHORT-BARRELED RIFLE OR SHORT-BARRELED SHOTGUN - 724.1C	1	14.67	14.67	14.67
REC. TRANSP, POSS FIREARM FELON - 724.26	18	17.70	8.29	27.20
DOMINION/CONTROL OF FIREARM OR OFFENSIVE WEAPON BY FELON - 724.26(1)	22	16.65	7.63	31.91
DOMINION/CONTROL OF FIREARM OR OFFENSIVE WEAPON BY DOMESTIC ABUSE OFFENDER - 724.26(2)(a)	6	21.17	9.97	54.21
UNAUTHORIZED POSS OF OFFENSIVE WEAPONS - 724.3	2	13.91	13.78	14.05
CARRYING WEAPONS ON SCHOOL GROUNDS - 724.4B(1)	1	22.24	22.24	22.24
PIMPING - 725.2	2	19.61	15.07	24.14
INCEST-10 YR. SPECIAL SENTENCE - 726.2	4	26.55	16.94	37.43
SEXUAL EXPLOIT. OF MINOR - 10 YR. SPECIAL SENTENCE - 728.12(2)	2	24.56	12.34	36.78
FAILURE TO APPEAR FELONY CHG. 811.2(8),A	1	6.45	6.45	6.45
SPECIAL SENTENCE REVOCATION 2ND/SUB. - 908.5(2)B	1	57.27	57.27	57.27
FORGERY/IOWA LOTTERY FRAUD - 99G.36(1)	1	7.89	7.89	7.89

FY22 CLOSURES BY MOST SERIOUS CRIME AND LENGTH OF STAY	Offenders	Average LOS Months	Min LOS Months	Max LOS Months
Felony - Enhancement to Original Penalty	95	29.13	0.59	98.32
PROH ACTS-MFG, DEL, CONSP OR POSS W/INT METH GT 5GM BUT LT 5KG - 124.401(1)(b)(7)	5	16.22	2.63	27.60
PROH ACTS-MFG, DEL, CONSP OR POSS W/INT OTHER CONT SUBST LT 500GM - 124.401(1)(c)(2)(d)	1	14.24	14.24	14.24
PROH ACTS-MFG, DEL, CONSP, OR POSS W/INT METH LT 5GM - 124.401(1)(c)(6)	4	30.00	18.85	41.02
PROH ACTS - FIREARM POSS/CONTROL 2X PENALTY ENH - 124.401(1E)	4	22.42	14.24	26.25
POSS OF A CONTR SUB 3RD AND SUBSEQ - 124.401(5)(c)	7	32.15	16.25	88.03
PROH ACTS-DIST, POSS W/INT TO DIST SCHED I, II, III REAL PROP PENALTY ENHANCED - ADD 5 YR - 124.401A	1	26.81	26.81	26.81
CONT SUBST 2ND OR SUBSEQ - NOT TO EXCEED 3X PENALTY ENH - 124.411	22	35.90	3.26	98.32
LEAVE SCENE OF INJURY/DEATH TRAFFIC - 321.261(4)	1	34.31	34.31	34.31
ELUDING - 321.279(3)	4	42.97	26.51	77.57
ELUDING - SPEED IN EXCESS OF 25 MPH OVER LIMIT, PLUS PARTICIPATING IN A FELONY - 321.279(3)(a)	1	0.59	0.59	0.59
OWI 3RD OR SUBSEQ - 321J.2(2)(c)	2	14.19	1.91	26.48
SEX OFFENDER REGISTRATION VIOLATION 2ND OR SUBSEQ - 692A.104	1	31.45	31.45	31.45
SEX OFFENDER REGISTRATION VIOLATION 2ND OR SUBSEQ - 692A.104-B	1	29.31	29.31	29.31
SEX OFFENDER REGISTRATION VIOLATION 2ND OR SUBSEQ - 692A.111-B	1	22.80	22.80	22.80
CONSPIRACY/COMMIT FORC FELONY - 706.3,A	1	30.95	30.95	30.95
MURDER 2ND DEG (85%) - 707.3	1	36.38	36.38	36.38
DOMESTIC ABUSE ASSAULT IMPEDING AIR/BLOOD FLOW CAUSING BODILY INJURY - 708.2A(5)	1	26.68	26.68	26.68
ASSLT WHILE PARTIC. IN FELONY - 708.3,B	1	28.03	28.03	28.03
ASSAULT INTENT OF INJURY PEACE OFFICER/OTHERS - 708.3A(1)	1	57.86	57.86	57.86
WILLFUL INJURY CAUSING SERIOUS INJURY - 708.4(1)	2	57.27	17.66	96.88
INTIMIDATION WITH A DANGEROUS WEAPON - 708.6(1)	1	27.14	27.14	27.14
SEX ABUSE 3RD BY FORCE, 1ST OFF - LIFE SPECIAL SENTENCE - 709.4(1)(A)	1	63.75	63.75	63.75

FY22 CLOSURES BY MOST SERIOUS CRIME AND LENGTH OF STAY	Offenders	Average LOS Months	Min LOS Months	Max LOS Months
ARSON 1ST DEG - 712.2	1	21.55	21.55	21.55
BURGLARY 1ST DEG - 713.2	1	35.26	35.26	35.26
BURGLARY 1ST DEG - 713.3	1	31.84	31.84	31.84
BURGLARY 2ND DEG - 713.5	1	31.32	31.32	31.32
BURGLARY 3RD DEG - 713.6A	1	27.89	27.89	27.89
THEFT 2ND DEG - 714.2(2)	9	29.66	17.24	48.39
FORGERY - 715A.2(2)(a)	7	23.26	10.36	29.90
UNAUTH. USE OF CREDIT CARD, GREATER THAN \$1K, LESS THAN \$10K - 715A.6(2)(B)	1	4.64	4.64	4.64
IDENTITY THEFT OVER \$1000 UNDER \$10000 - 715A.8(3)(b)	1	18.39	18.39	18.39
INTERFERENCE W/OFFICIAL ACTS DANGEROUS WEAPON - 719.1(1)(f)	1	32.57	32.57	32.57
TRAFFICKING IN STOLEN WEAPONS - 724.16A,1	1	33.06	33.06	33.06
DOMINION/CONTROL OF FIREARM OR OFFENSIVE WEAPON BY FELON - 724.26(1)	4	18.47	1.91	26.02
PIMPING - 725.2	1	57.80	57.80	57.80
SEX ABUSE/LASC. ACTS ENHANCED PENALTY CLASS A - LIFE SPECIAL SENTENCE - 902.14	1	1.38	1.38	1.38

Felony - Mandatory Minimum	2	57.12	37.11	77.14
SEXUAL PREDATOR COMMUNITY SUPERVISION - 901A.2(7)	1	77.14	77.14	77.14
SEXUAL PREDATOR COMMUNITY SUPERVISION - UP TO 2 YEARS - 901A.2(9)	1	37.11	37.11	37.11

Aggravated Misdemeanor	397	8.32	0.03	35.56
SUPPLY ALCOHOL TO PERSON UNDER LEGAL AGE - SERIOUS INJURY - 123.47(6)	1	9.14	9.14	9.14
ALCOHOL CHAPTER 123, 3RD AND SUBSEQ - 123.91(2)	1	11.02	11.02	11.02
PROH ACTS-MFG, DEL, CONSP OR POSS SCHED IV OR V - 124.401(1)(d)	1	3.26	3.26	3.26
POSS OF CONTROLLED SUBSTANCE 2ND OFF - 124.401(5)	6	7.45	6.38	8.85
POSS OF CONTROLLED SUBSTANCE 2ND OFF - 124.401(5),B	16	10.70	3.88	21.25
POSS OF CONTROLLED SUBSTANCE MARIJUANA 3RD OR SUBSEQ - 124.401(5),C	1	6.94	6.94	6.94
POSS OF CONTROLLED SUBSTANCE 2ND OFF - 124.401(5)b	7	9.97	5.72	13.39

FY22 CLOSURES BY MOST SERIOUS CRIME AND LENGTH OF STAY	Offenders	Average LOS Months	Min LOS Months	Max LOS Months
LEAVING SCENE OF SERIOUS INJURY ACCIDENT - 321.261(3)	1	7.60	7.60	7.60
ELUDING - 321.279(2)	7	6.83	4.05	10.03
DRIVING WHILE BARRED - MOTOR VEHICLE - 321.561	1	9.84	9.84	9.84
DRIVING WHILE BARRED HABITUAL OFFENDER - 321.561	5	5.61	0.95	8.78
OWI 2ND OFF - 321J.2(2)(b)	46	3.71	0.69	13.36
OWI 2ND OFF - 321J.2(B)	1	1.12	1.12	1.12
SEX OFFENDER REGISTRATION VIOLATION 1ST OFF - 692A.104-A	3	6.82	3.52	8.98
STALKING 1ST OFF - 708.11(3C)	1	8.65	8.65	8.65
ASSAULT INTENT OF INJURY - 708.2(1)	16	12.18	0.03	35.56
ASSAULT WHILE DISPLAYING A DANGEROUS WEAPON - 708.2(3)	21	8.28	0.03	20.33
DOMESTIC ABUSE ASSAULT W/INTENT TO INFLICT SER. INJ. 1ST OFF - 708.2A(2)(c)	7	10.32	2.07	17.76
DOMESTIC ABUSE ASSAULT IMPEDING FLOW OF AIR/BLOOD - 708.2A(2)(d)	19	9.78	3.91	25.33
DOMESTIC ABUSE ASSAULT WITH INTENT OR DISPLAYS A WEAPON - 708.2A(2C)	3	6.79	5.13	8.06
DOMESTIC ABUSE ASSAULT 2ND OFF - 708.2A(3B)	49	8.92	0.10	22.01
ASSAULT CAUSING INJURY, VIOL OF INDIV RIGHTS - 708.2C(3)	1	0.16	0.16	0.16
ASSAULT CAUSING INJURY PEACE OFFICERS/OTHERS - 708.3A(3)	6	8.95	2.86	14.44
HARASSMENT 1ST DEG - 708.7(2)	23	8.46	0.20	24.74
ASSLT. TO COMMIT SEX ABUSE NO INJ - 10 YR SPECIAL SENTENCE - 709.11(3)	12	12.19	4.44	21.51
INDECENT CONTACT W/CHILD - 10 YR SPECIAL SENTENCE - 709.12	2	15.61	12.11	19.11
INDECENT CONTACT W/ CHILD - 10 YR SPECIAL SENTENCE - 709.12(1)(a)	1	6.38	6.38	6.38
INDECENT EXPOSURE - 10 YR SPECIAL SENTENCE - 709.9(2)(b)	1	7.24	7.24	7.24
ATTEMPT TO ENTICE AWAY MINOR - 710.10(3)	1	2.50	2.50	2.50
ATTEMPT TO ENTICE AWAY MINOR - 710.10(4)	1	8.62	8.62	8.62
HARBORING A RUNAWAY - 710.8	1	9.18	9.18	9.18
AGGRAVATED THEFT - 711.3B	1	8.62	8.62	8.62
ARSON 3RD DEG - 712.4	2	13.04	5.36	20.72
BURGLARY 3RD DEG MOTOR VEHICLE - 713.6A(2)	8	7.70	0.13	14.31

FY22 CLOSURES BY MOST SERIOUS CRIME AND LENGTH OF STAY	Offenders	Average LOS Months	Min LOS Months	Max LOS Months
ATTEMPTED BURGLARY 3RD DEG - 713.6B	13	6.64	0.07	16.02
THEFT 3RD DEG - 714.2(3)	21	8.66	2.86	23.62
AGGRAVATED THEFT - 714.3A(2)(a)	1	13.29	13.29	13.29
OPERATE VEHICLE NO CONSENT - 714.7	23	8.12	0.49	18.85
FORGERY - USE/UTTER FORGED WRITING - 715A.2(2)(b)	2	7.01	6.78	7.24
FORGERY - 715A.2(B)	1	8.78	8.78	8.78
UNAUTHORIZED USE OF CREDIT CARDS - 715A.6(2)	3	8.09	3.91	10.23
UNAUTH. USE OF CREDIT CARD \$1K - 715A.6(2)(C)	10	7.35	3.62	13.59
IDENTITY THEFT - 715A.8,B	1	5.03	5.03	5.03
CRIMINAL MISCHIEF 3RD DEG - 716.5	12	8.21	1.81	22.73
INTERFERENCE W/OFFICIAL ACTS RESULT SERIOUS INJURY - 719.1(1)(d)	1	0.07	0.07	0.07
INTERFERENCE W/OFFICIAL ACTS, INFLICT SERIOUS INJURY - 719.1(1)(e)	2	8.57	6.35	10.79
PREV. APPREHEN., OBSTR. PROSC. - 719.3	1	2.40	2.40	2.40
TAMPERING W/WITNESS OR JUROR - 720.4	3	9.09	1.97	15.92
RIOT - 723.1	1	5.43	5.43	5.43
CARRYING WEAPONS - 724.4	9	11.45	1.55	19.97
CONCEALED KNIFE USED IN A CRIME - 724.4(2)	1	9.28	9.28	9.28
GO ARMED WITH KNIFE BLADE > 8" - 724.4(3)A	2	8.50	8.03	8.98
CHILD ENDANGERMENT - 726.6(1)	1	26.68	26.68	26.68
CHILD ENDANGERMENT NO INJURY - 726.6(7)	10	10.47	1.28	24.47
SEXUAL EXPLOIT. OF MINOR - 10 YR SPECIAL SENTENCE - 728.12(3)	6	10.82	0.16	26.71

Serious Misdemeanor	19	7.14	0.16	22.57
POSS OF CONTROLLED SUBSTANCE 1ST OFF - 124.401(5)(a)	3	6.01	2.50	12.24
DRIVING WHILE LICENSE DENIED OR REVOKED - 321J.21	1	0.23	0.23	0.23
ASSAULT W/ BODILY INJURY OR MENTAL ILLNESS - 708.2(2)	3	3.65	0.16	7.30
DOMESTIC ABUSE ASSAULT W/ BODILY INJURY OR MENTAL ILLNESS - 708.2A(2B)	3	3.00	1.15	4.24
DOMESTIC ABUSE ASSAULT 2ND OFF - 708.2A(3A)	2	5.97	3.98	7.96
ASSAULT ON PEACE OFFICERS & OTHERS - 708.3A(4)	1	4.67	4.67	4.67
HARASSMENT 2ND DEG - 708.7(3)	1	5.30	5.30	5.30

FY22 CLOSURES BY MOST SERIOUS CRIME AND LENGTH OF STAY	Offenders	Average of LOS Months	Min of LOS Months	Max of LOS Months
INDECENT EXPOSURE - 10 YR SPECIAL SENTENCE - 709.9	1	10.13	10.13	10.13
CRIMINAL MISCHIEF 4TH DEG - 716.6,A	1	7.99	7.99	7.99
INTERFERENCE W/ OFFICIAL ACTS -BODILY INJURY - 719.1(1)(c)	1	9.80	9.80	9.80
POSS OR CARRYING OF DANGEROUS WEAPONS WHILE UNDER THE INFLUENCE - 724.4C	1	6.32	6.32	6.32
DISEM/EXHIB OBSC. MAT. TO MINOR - 728.2	1	22.57	22.57	22.57

Simple Misdemeanor	1	7.37	7.37	7.37
CONTEMPT - VIOLATION OF NO CONTACT PROTECTIVE ORDER - 664A.7(1)	1	7.37	7.37	7.37